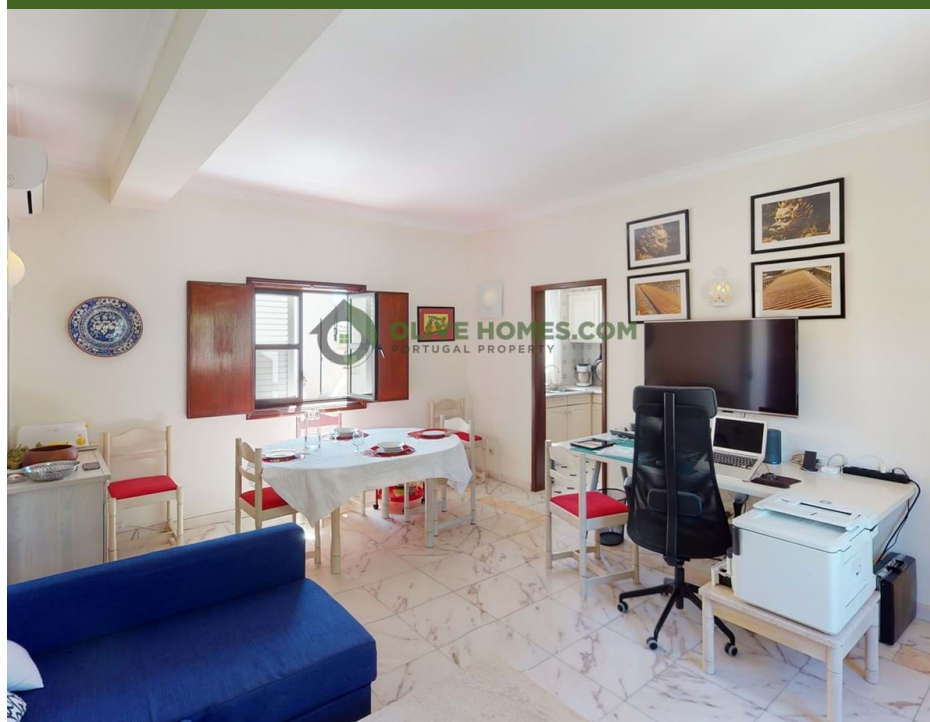


395.000 | Ref. OH2097 | Loulé



2



1



88 m2



88 m2

2 Bedroom apartment close to the Marina in Vilamoura

Excellent location very central, just 100m from Vilamoura Marina and 10min walk from the beaches. 2 bedroom apartment located on the 2nd floor of a small condominium. The apartment is in a traditional style, consisting of a hall, living room, independent kitchen, 2 bedrooms and 1 bathroom, it also has an underground parking space. Excellent for a permanent home or for holidays!

AMI: 13432 | Azeitona Lares - Soc de Med Imob Lda, Edifício Alsakia, lote LHM10, R/C, EP12, Fonte Santa, Quarteira, 8125-020

Email: info@olivehomes.com