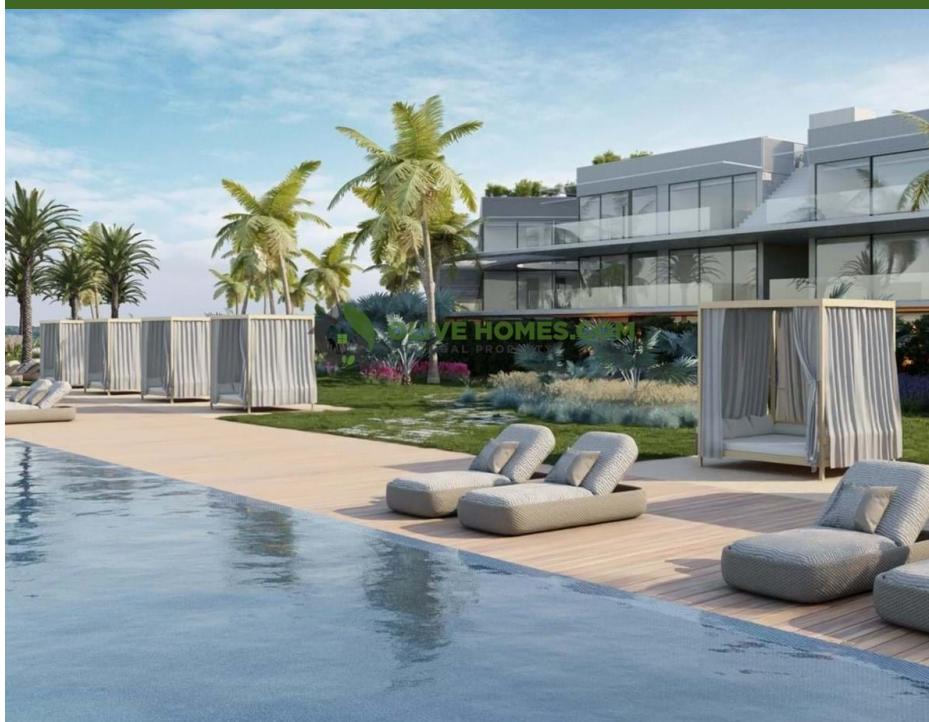


2.200.000 | Ref. OHL2069 | Loulé



2



3



157 m2



382 m2

Penthouse 2 bedroom apartment in Vilamoura

This is a closed complex of 45 luxury apartments in an exceptional location within the Vilamoura resort.

Set among water canals and golf courses, with the blue sea as a background, the condominium is close to all amenities, either walking or cycling to the centre, it is just 2km from the marina and Falésia beach, and just 1400 metres from three of the five Vilamoura golf courses.

Carefully planned for a balanced and sustainable use, this special place has a building footprint of only 2200sqm within a plot of 22,000sqm, hence providing all the space to enjoy a large landscaped area, which is unique and luxurious.

The landscaping has been developed by Jardim Vista, a leading company in many projects of exc

AMI: 13432 | Azeitona Lares - Soc de Med Imob Lda, Edifício Alsakia, lote LHM10, R/C, EP12, Fonte Santa, Quarteira, 8125-020

Email: info@olivehomes.com