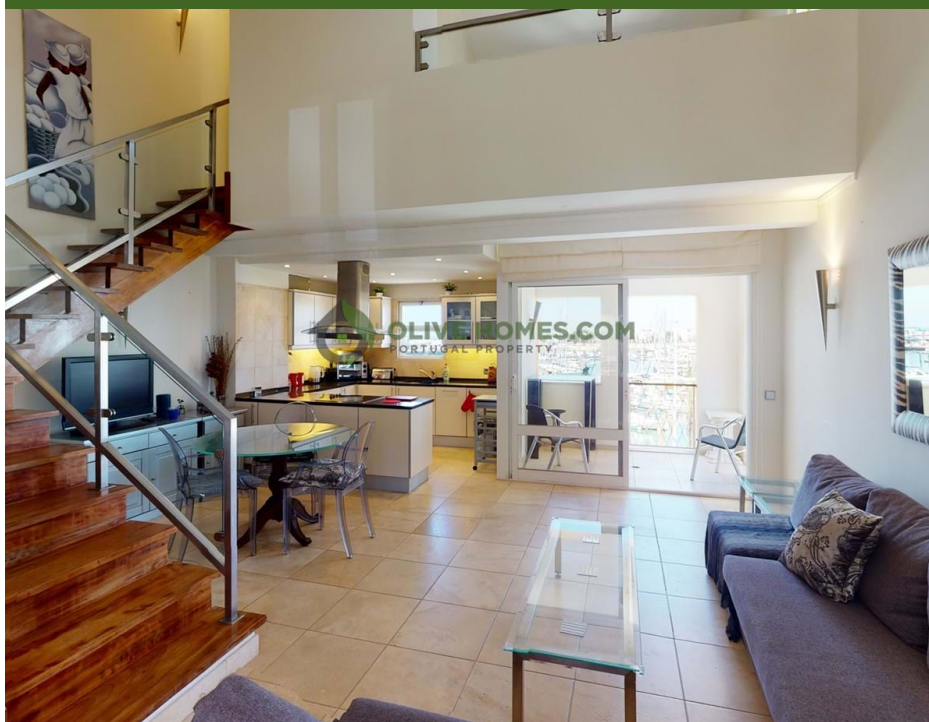


475.000 | Ref. OH2085 | Loulé



1



1



86 m2



86 m2

Stunning duplex apartment with glorious views across Vilamoura marina

Stunning one bedroom duplex apartment with glorious views across Vilamoura marina. The views are west facing and uninterrupted across the entire Marina. Located on the second floor the entrance area of this unique property opens up to a great sized open plan lounge, dining area and fully fitted kitchen. The balcony with high table offers the incredible views across the whole marina and is a fabulous space to watch the world go by from. The bedroom is immediately above the lounge area and has a bathroom en-suite. This double bedroom also offers the same views as the balcony below. This beautifully presented property is in great condition and is ideally located in this thriving marina area. It would serve well as a holiday home and would rent out well too.

AMI: 13432 | Azeitona Lares - Soc de Med Imob Lda, Edifício Alsakia, lote LHM10, R/C, EP12, Fonte Santa, Quarteira, 8125-020

Email: info@olivehomes.com