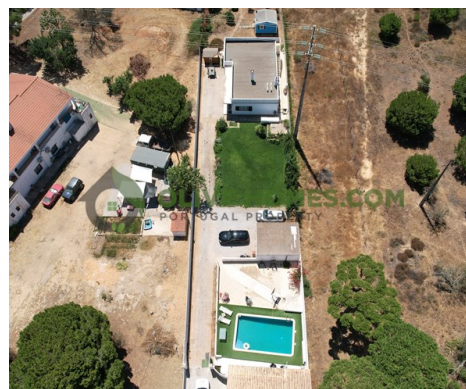


690.000 | Ref. OH2343 | Loulé



5



3



274 m²



1500 m²

Traditional Three Bedroom Villa with an Independent Two Bedroom Annex located between Almancil, Quarteira and Vila Sol

Traditional three bedroom villa with an independent two bedroom annex located between Almancil, Quarteira and Vila Sol

Situated just minutes away from amenities this charming villa is set on a large plot. It has delightful countryside views despite being central to the golf courses, shops and restaurants.

There are three great size bedrooms in the main house and an office. The delightful lounge/dining room also has a traditional fireplace. This property also benefits from having a storage/laundry room as well and a fully fitted kitchen.

The two bedroom annex overlooks the swimming pool, exercise area and garden. It has two good

AMI: 13432 | Azeitona Lares - Soc de Med Imob Lda, Edifício Alsakia, lote LHM10, R/C, EP12, Fonte Santa, Quarteira, 8125-020

Email: info@olivehomes.com