

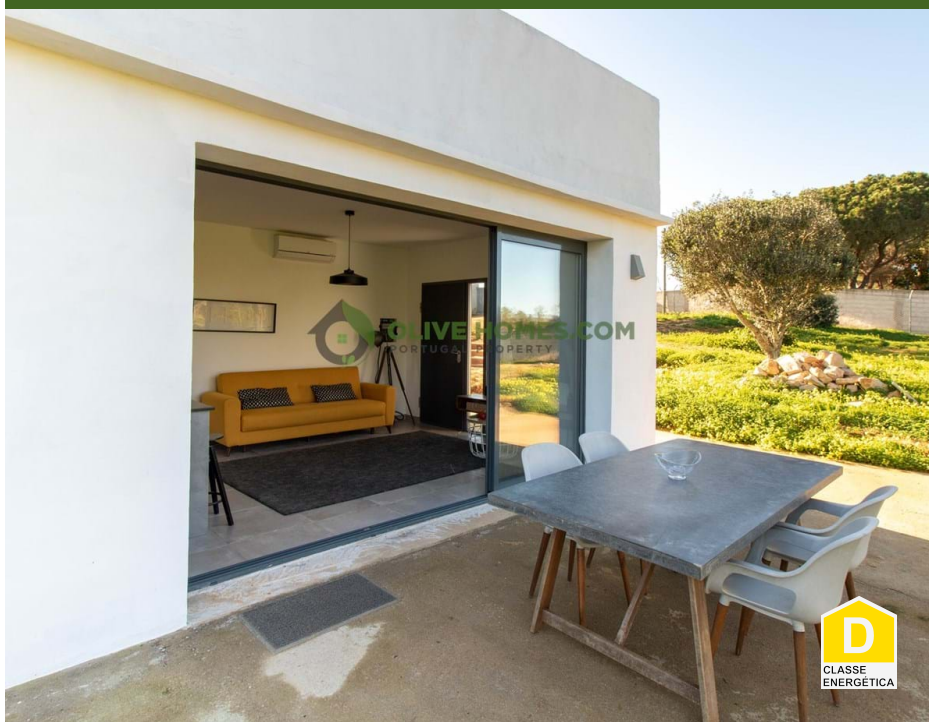


**OLIVE HOMES**  
PORTUGAL PROPERTY

**+351 289103471**

(chamada para rede fixa nacional)

565.000 | Ref. OHL2090 | Loulé



2



2



100 m2



3115 m2

### Fully Renovated Farmhouse

This lovely property has been recently renovated, very well distributed, this property has one bedroom, and an equipped kitchen with an open space with the living room, family bathroom, and extra room that can be used as a children's room or office.

The annex has been converted into a small studio with a kitchen and bathroom with a shower, perfect for guests.

Both units are equipped with air-conditioning, double-glazed windows, a fully fenced property and it has an electric main gate, due to the size of the plot the building size can be extended up to 300m2.

AMI: 13432 | Azeitona Lares - Soc de Med Imob Lda, Edifício Alsakia, lote LHM10, R/C,  
EP12, Fonte Santa, Quarteira, 8125-020

Email: [info@olivehomes.com](mailto:info@olivehomes.com)

Powered by CASAFARI CRM