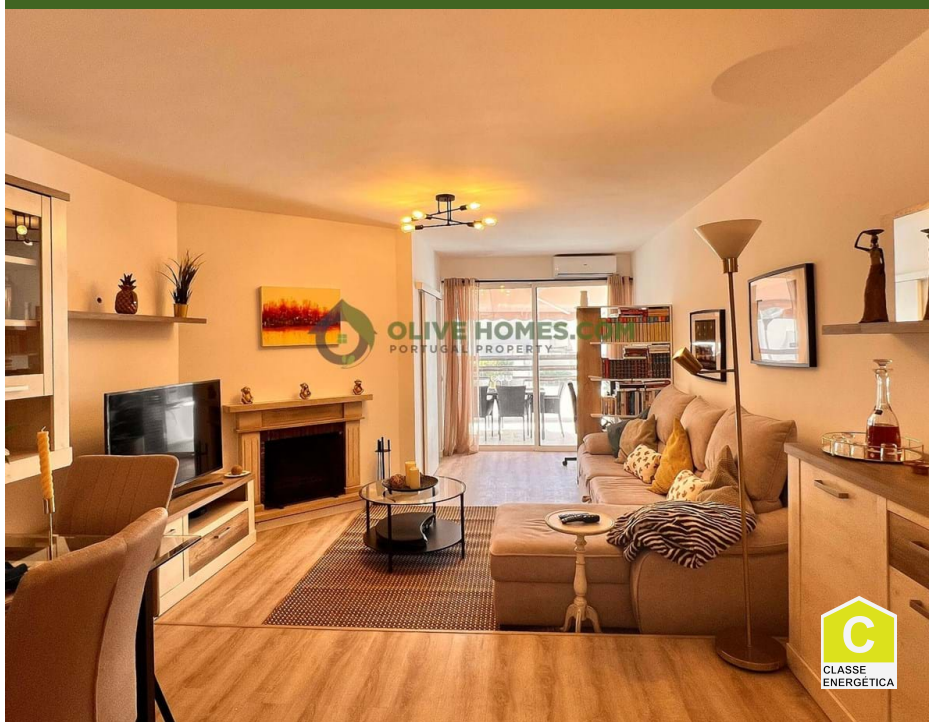


349.000 | Ref. OH2698 | Loulé



2



2



92 m2



104 m2

## Gorgeous Two Bedroom Townhouse in Tranquil Location in Vilamoura

This modern and contemporary townhouse boasting a well-designed layout spanning across two floors. This residence seamlessly blends form and function to create a space that is both stylish and functional.

The ground floor welcomes you with a kitchenette, a cosy living room, a convenient storage room, a service bathroom/laundry room, and an inviting terrace. The lounge is equipped with a fireplace, perfect for cosy evenings, along with modern amenities like air conditioning and retractable sunshades. All necessary appliances are seamlessly integrated into the kitchenette.

Ascending to the first floor, you will find two comfortably sized bedrooms and a stylishly appointed well-equipped bathroom. Both bedrooms feature new wardrobes and air conditioning for added comfort. One of the bedrooms also grants access to a private terrace adorned with a hammock, off

AMI: 13432 | Azeitona Lares - Soc de Med Imob Lda, Edifício Alsakia, lote LHM10, R/C, EP12, Fonte Santa, Quarteira, 8125-020

Email: [info@olivehomes.com](mailto:info@olivehomes.com)