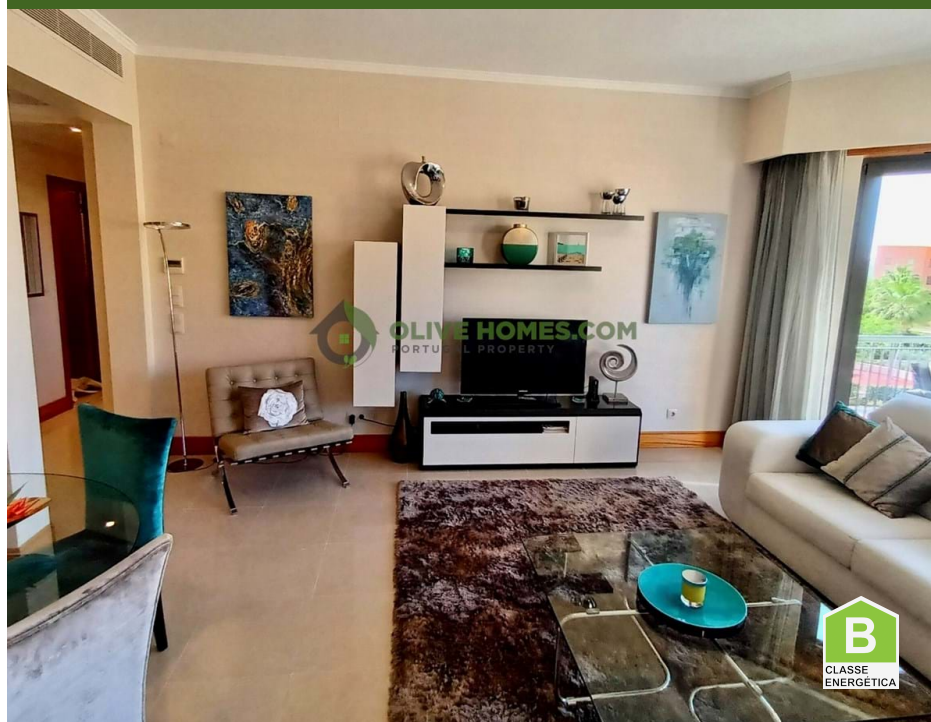


550.000 | Ref. OHL2154 | Loulé



2



2



85 m2



98 m2

Top floor 2 bedroom apartment in The Residences, near Victoria Golf Club, Vilamoura

This is a two bedroom apartment in a private condominium with swimming pool, garden gym and underground parking and storage rooms. The apartment is located on the top floor with stunning country views.

It is a spacious apartment, ready to be lived in, with good quality finishings, air-conditioning and fully equipped white kitchen. Come and visit!

OLIVEHOMES.COM

A unique real estate company with a vast experience and local knowledge within the property market to buy your perfect home or sell your existing home. Virtual selling is our reality. We offer our unique virtual experience on this amazing property and many others. Take a look around in yo

AMI: 13432 | Azeitona Lares - Soc de Med Imob Lda, Edifício Alsakia, lote LHM10, R/C, EP12, Fonte Santa, Quarteira, 8125-020

Email: info@olivehomes.com