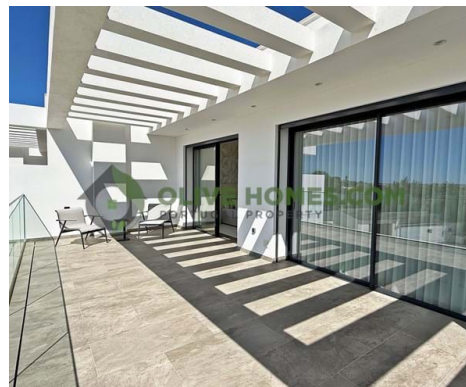


1.040.000 | Ref. OH2821 | Loulé



5



5



340 m2



450 m2

## High-quality townhouse excellently located in a quiet village of Boliqueime

Discover the pinnacle of luxury living just outside Boliqueime with these six modern townhouses, each spanning an impressive 414 m<sup>2</sup> of thoughtfully designed space.

Tailored for a refined lifestyle, each residence features four bedrooms and is perfectly located just 20 minutes from Faro International Airport and a mere 10-minute drive to beautiful beaches, top-tier golf courses, and the renowned Vilamoura Marina.

Breathtaking sea views enhance the serene ambiance, offering residents a truly unique visual escape.

The architecture seamlessly combines contemporary elegance with functionality. On the first floor, three spacious ensuite bedrooms ensure privacy and relaxation. The main level welcomes you to

AMI: 13432 | Azeitona Lares - Soc de Med Imob Lda, Edifício Alsakia, lote LHM10, R/C, EP12, Fonte Santa, Quarteira, 8125-020

Email: [info@olivehomes.com](mailto:info@olivehomes.com)