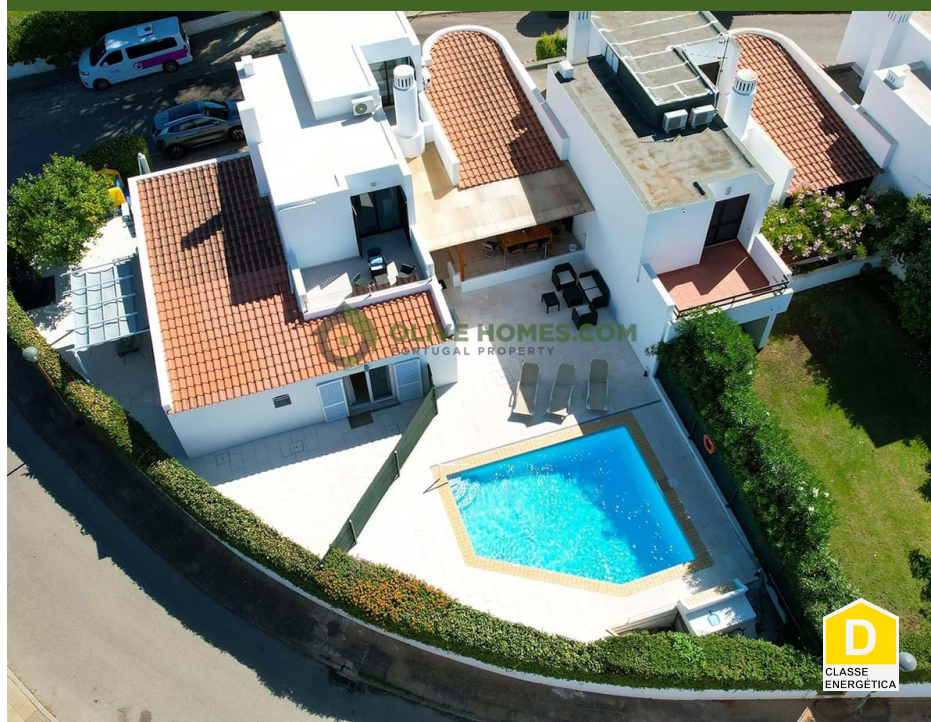


948.000 | Ref. OH2961 | Loulé



4



3



157 m2



335 m2

### Three plus one bedroom semi-detached townhouse in Vilamoura

This charming three plus one bedroom semi-detached townhouse offers a unique opportunity with its cleverly designed annex, perfect for extended family living or rental income.

The main house comprises three well-proportioned bedrooms, a recently refurbished (2023) kitchen, and a spacious living room with direct access to the outdoor dining terrace and the beautifully kept garden, boasting tranquil pool views.

The annex features its own modern open-plan kitchen and living area, together with an additional bedroom, making it an ideal independent space for guests, grandparents, or as a rental option on either a weekly or yearly basis.

Situated in a quiet cul-de-sac, the property enjoys a peaceful setting while remaining highly convenient.

AMI: 13432 | Azeitona Lares - Soc de Med Imob Lda, Edifício Alsakia, lote LHM10, R/C, EP12, Fonte Santa, Quarteira, 8125-020

Email: [info@olivehomes.com](mailto:info@olivehomes.com)